



超高速包缝机 使用说明书

E 系列

重要安全事项

1. 使用此缝纫机时，必须遵守包括如下项目的的安全措施。
2. 使用此缝纫机之前，请阅读本使用说明书在内的所有指示文件。同时应该将此使用说明书妥善保管，以便能够随时查阅。
3. 使用此缝纫机和缝纫机动作中，所有的安全装置应安装到规定的位置。没有安装规定的安全装置的缝纫机禁止使用。
4. 此缝纫机应由接受过培训的操作人员来操作。
5. 使用缝纫机时，建议佩戴安全防护眼镜。
6. 发生下列情况时，应立即关掉电源开关，或拔下电源线插头。
 - 6-1. 机针、弯针、分离器穿线或更换旋梭时。
 - 6-2. 更换机针、压脚、针板、弯针、分离器、送布牙、护针器、支架、布导向器等时。
 - 6-3. 修理时。
 - 6-4. 工作场所无人了或离开工作场所时。
7. 缝纫机以及附属装置使用的机油、润滑油等液体流入眼睛或沾到皮肤上时，或被误饮时，应立即清洗有关部分并去医院治疗。
8. 禁止油手触摸打开了缝纫机开关通电的零件或装置。
9. 有关缝纫机的修理、改造、调整应由受过专门训练的技术人员或专家进行。
10. 一般的维修保养应由受过训练的人员来进行。
11. 有关缝纫机的电器方面的修理、维修应有资格的电路技术人员或专家的监督和指挥下进行。
12. 修理、保管有关空气、汽缸等压缩空气的零件时，应切断空气压缩机供气源后再进行。
13. 缝纫机的使用期间应定期进行清扫。
14. 为了正常安全运转，应安装地线。同时应在不受高频焊机等强噪音源影响的环境下使用。
15. 电源插头应用具有电器专门知识的人来安装。电源插头必须连接到接地插座上。
16. 缝纫机指定用途以外不能使用。
17. 对缝纫机的改造、变更应符合安全规格，并采取有效的安全措施。另外，对于有关改造和变更，本公司概不负责。

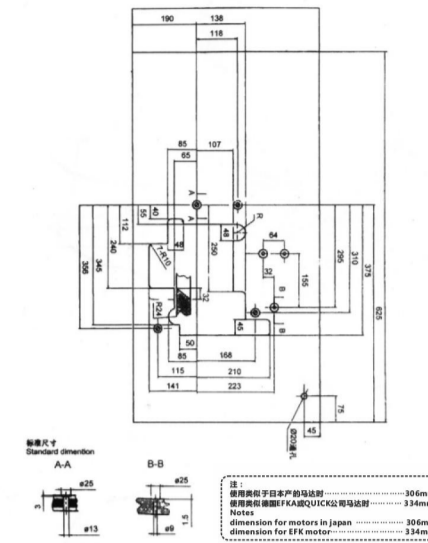
SAFDEY ENSURENC

1. When using the machine, please strictly observe the safety measures as the following items.
2. Before using the machine, please read all instructions contained in the instruction manual. Please take care of the manual for handle consult.
3. When using the machine, make sure that all the safety devices are installed to the required location. Forbid to use the machine if the safety devices are not in the right position.
4. The machine shall be operated by the trained operator.
5. When using the machine, safety glasses are recommended.
6. Please turn off the power or unplug the power plug when the following cases happen.
 - 6-1. When threading the stitch, double stitch, segregator and replacing bobbin.
 - 6-2. When changing replacing the stitch, the presser foot, the throat plate, bend stitch, the feed dog, the stitch guard, the folder and the cloth guider.
 - 6-3. Repairing work.
 - 6-4. Nobody in the working place or leaving the working place.
7. The oil, lubrication used in the machine and the peripheral device flow in eyes or skin, or drinking mistakenly, please wash the correlation parts and go to hospital.
8. Prohibit to touch the power on/off accessory and devices of the machine with oil hand.
9. The repair, alteration, adjustment about the machine should be carried out by professional staff.
10. General repair and maintenance of the machine should be carried out by trained staff.
11. Repair and maintenance about electrical aspects of the machine should be done by professional staff or experts.
12. When repairing, preserving the accessory about the air, compressed air cylinder, the air compressor to supply source should be cut off.
13. The sewing machines should be regular cleaned while using.
14. The machine should be connected to ground wire for safe operation. It should be used against strong noise such as a high-frequency welding machine.
15. Electrical power plug should be installed by trained staff. Power plug must be connected to the ground.
16. Sewing machine can not be used other than the designated purpose.
17. Alteration and modification of the machine should be accorded to safety requirements and effective safety measures should be taken. In addition, we assume no responsibility for alteration and modification.

台板加工图

Schematic diagram of the machine table

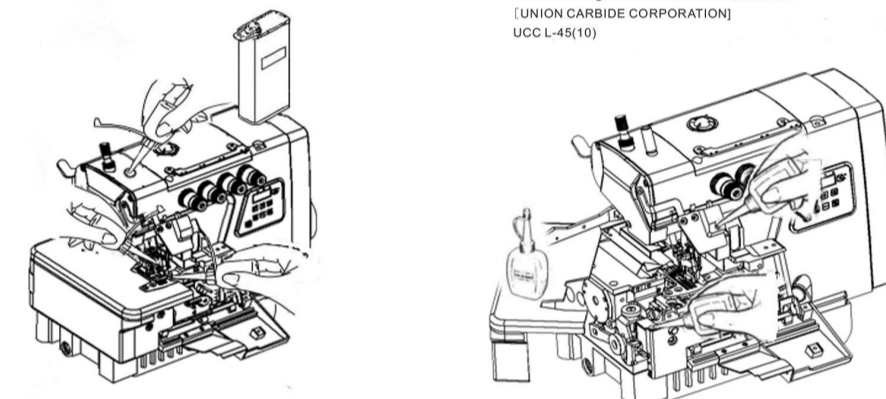
请参照下图进行台板的加工 Cut the table referring to the diagram



手动给油 Manual Lubrication

手动给油是在缝纫机最初开始使用时或相当一段时间没使用时，请供给2-3滴油。

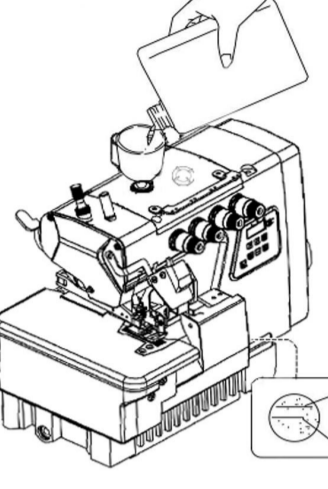
Apply 2 or 3 drops of oil by hand when the machine is used for the first time or has been left unused for some time.



给油 Lubrication

加油量使油面处于H线与L线之间为好。当油面低于L线时，就要及时补充机油。

After filling the oil pan, the top of the indicator should be between (H)and (L) lines. Add oil, when the oil level indicator reaches or goes below (L).



给HR装置供油 Filling the HR device with silicon oil

为防止断线，尽早给HR装置供油。

注：关于购买硅油，请咨询代理店或于公司营业课联系。

Fill the HR device with oil before it is too low in order to prevent needle thread breakage and fabric damage.

Note: Use Pegasus recommended silicon oil. (UNION CARBIDE CORPORATION) UCC-L-45(10)

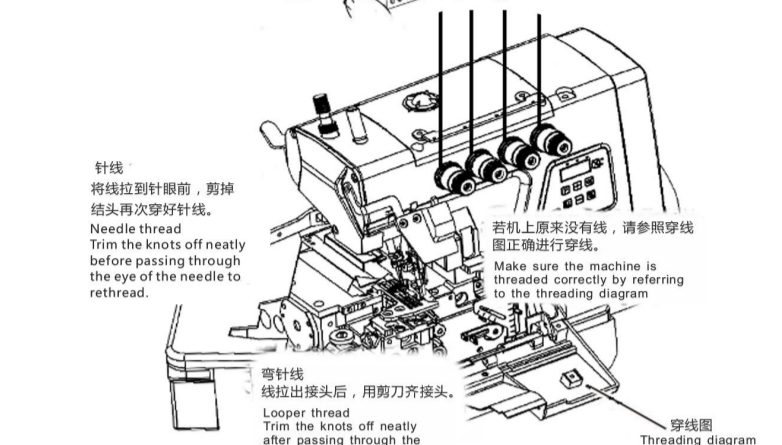
穿线的方法 Threading

把机上原有的线与弯针用线绑在一起。

① Know the preset thread and the thread being used together to thread the machine.

② 打开压脚杆及机盖（三处）

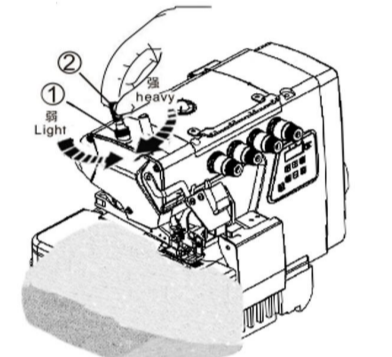
Open three covers. Sewing the presser foot aside.



压脚压力的调节 Adjusting the presser foot pressure

压脚压力的调节，松动螺母1，调节螺母2，在送布得到稳定状态下尽可能使用较弱的压力为好。

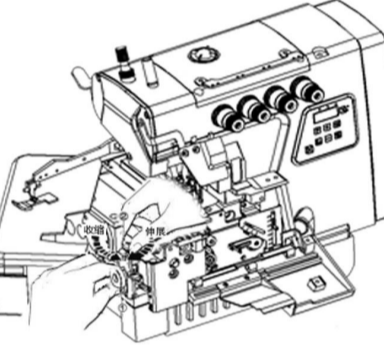
Loosen adjusting nut 1 and turn adjusting nut 2 to adjust the presser foot pressure. It should be as light as possible, yet be sufficient to obtain the proper stitch formation.



差动比的调节 Adjusting the diff. feed ratio

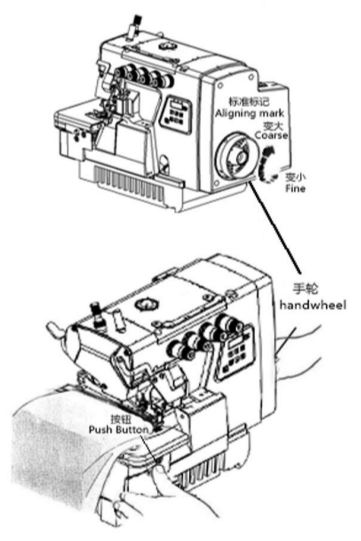
差动比的调节松开螺母1调节螺母2。

Loosen the adjusting nut 1 and turn the adjusting nut 2 to adjust the differential feed ratio.



针脚长度的调节 Adjusting the stitch length

1. 按住按钮，旋转手轮，按钮会陷进更深处。
 2. 这时边按按钮，边转动手轮，使校准标记号对准所希望的数字。
- While pressing the push button, turn the handwheel to seek the position at which the push button goes further into the depth.
2. Then, keeping the push button pressed, turn the handwheel and set the desired scale to the aligning mark.
- 注：针脚长度的调节务必在调节差动比之后进行。
- Note: Stitch length adjustment must only be made after the differential feed ratio has been changed.



换针 Replacing the needle

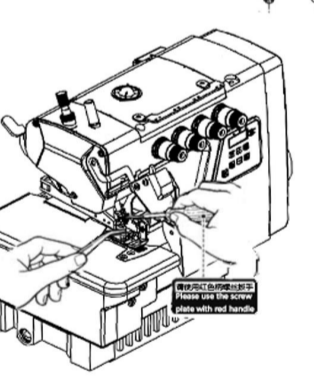
准确辨认针的前后，请将针凹向着后方，即背向操作者进行安装。

Check the needle carefully to see that the scarf is turned to the rear of the machine.

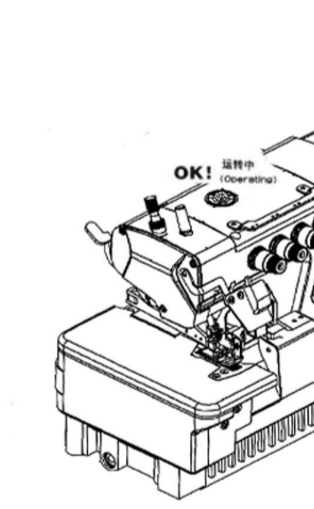
OK! NO!

标准使用针：DCX27

Standard needle: DCX27



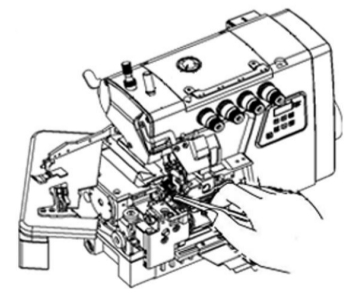
检查机油的循环 Checking the oil circulation



缝纫机的清扫 Cleaning the machine

缝纫机的清扫，以针板槽及送布牙周围为主。

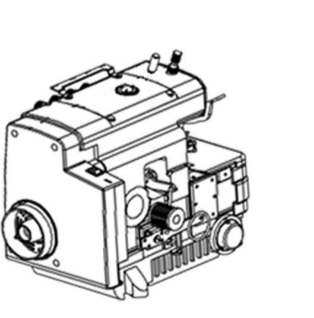
Mainly the slots of the needle plate and the feed rods should be cleaned.



检查油质量，更换油 Checking and replacing the oil filter

机油每6个月检查并更换。

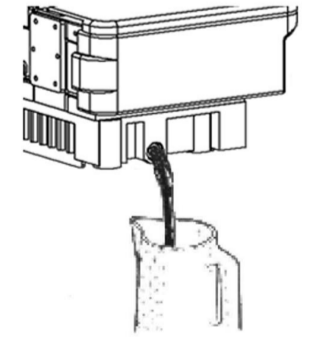
Check and replace the oil filter every six months.



换机油 Replacing the oil

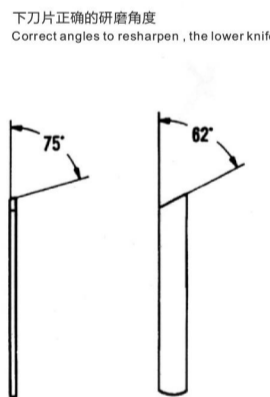
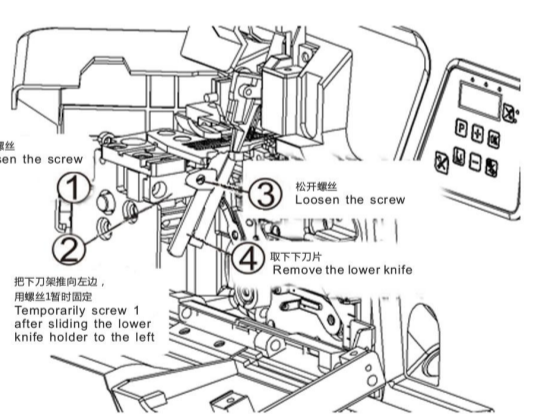
机油的更换，请在开始1个月后更换一次，然后每6个月更换一次。

Replacing the oil one month after the first use and every six months thereafter.

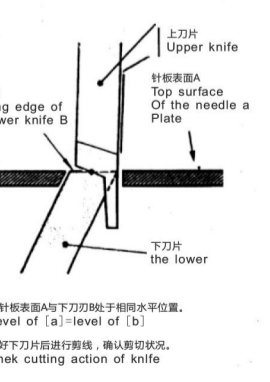
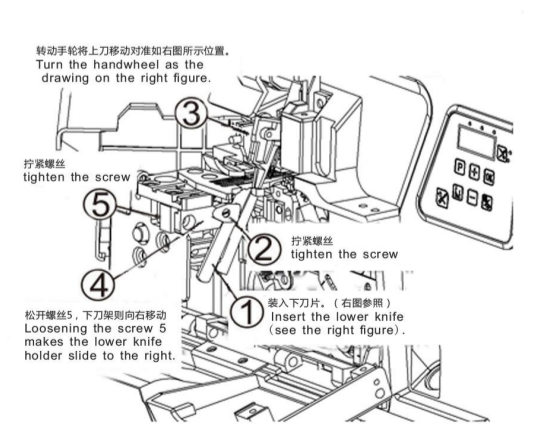


下刀片的更换 Replacing the lower knife

卸下下刀片 To remove the lower knife



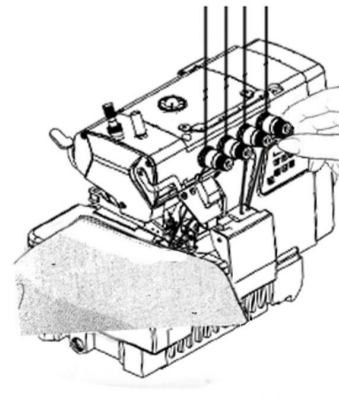
安装下刀片 To replace the lower knife



线状态的调节 Adjusting the thread tension

线张力状态的调节，请用针线调节螺母1，上弯针线调节螺母2，弯针线调节螺母3来进行调节。

Make tension adjustments with the needle thread knob 1, the upper looper knob 2, and the lower looper knob 3.



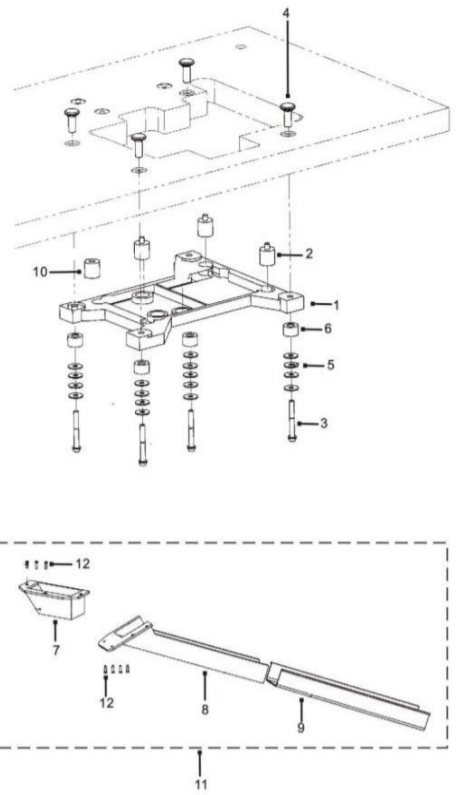
SunSir 浙江日圣缝纫机科技有限公司
ZHEJIANG SUNSIR SEWING MACHINE TECHNOLOGY CO., LTD

地址：中国浙江·台州·温岭·新河·锦绣路
ADD: Jingxiu Rd, Xinhe Town, Taizhou, Zhejiang, China

电话：0576-86570666 传真：0576-86553818
TEL: 0576-86558208 FAX: 0576-86559700

HTTP://WWW.CHINASUNSIR.COM

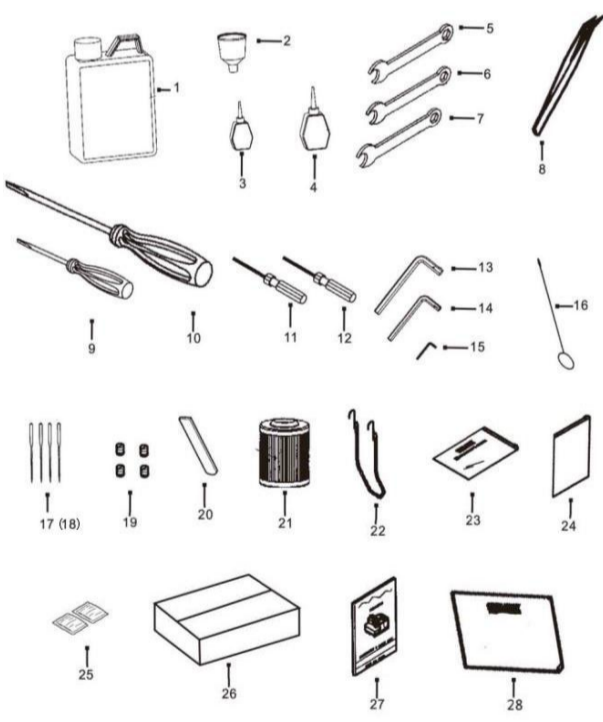
19. 十九、托盘、排料部分/Plater row material assemblies



十九、托盘、排料部件/Plater Row Material Assemblies

序号 NO.	品号 CODE	名称	NAME	数量 (Number)		
				三线 three- thread	四线 four- thread	五线 five- thread
1	BF700M181	机头托盘	machine head plate	1	1	1
2	BF700M182	减震垫组件	Cushion Rubber	3	3	3
3	BF700M183	螺钉M3x55	screw	1	1	1
4	BF700M184	托盘螺钉固定头	plate dow link bushing	4	4	4
5	BF700M185	大垫圈	washer	16	16	16
6	BF700M186	托盘连接套	plate dow link bushing	4	4	4
7	BF700M187	排料槽座	row material trolly base	1	1	1
8	BF700M188	排料槽 (1)	row material trolly(1)	1	1	1
9	BF700M189	排料槽 (2)	row material trolly(2)	1	1	1
10	BF700M1810	机头减震垫	Cushion Rubber	1	1	1
11	BF700M1879	排料槽组件	row material trolly assy.	1	1	1
12	BF700S076	排料槽座螺钉	screw	7	7	7

20. 二十、随机附件部分/Accessories assemblies

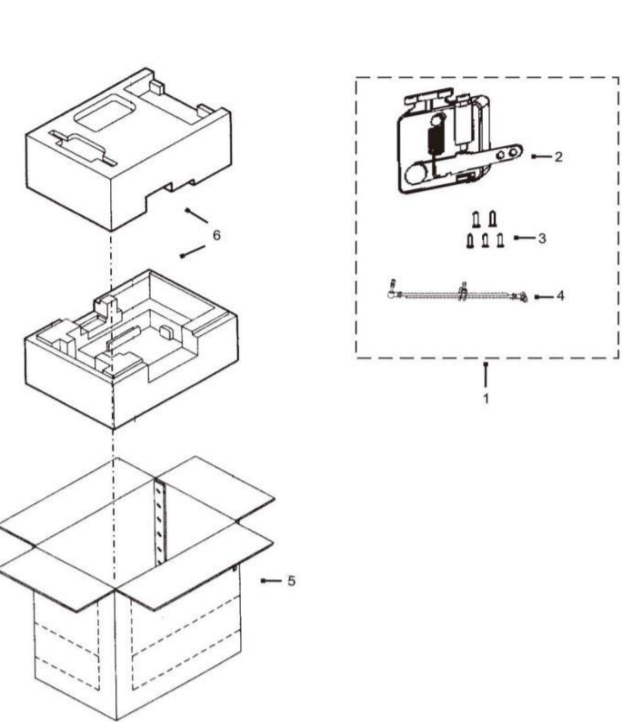


二十、随机附件部件/Accessories Assemblies

序号 NO.	品号 CODE	名称	NAME	数量 (Number)		
				三线 three- thread	四线 four- thread	五线 five- thread
1	BF800DYH	大油壶	oil can	1	1	1
2	BF700M194	漏斗	tundish	1	1	1
3	BF700M193	硅油壶	oil can	1	1	1
4	BF700M195	油壶/50CC	oil can	1	1	1
5	BF700M196	扳手 (6mm)	spanner	1	1	1
6	BF700M197	扳手 (7mm)	spanner	1	1	1
7	BF700M198	扳手 (8mm)	spanner	1	1	1
8	BF700M1916	镊子	tweezer	1	1	1
9	BF800ZBFD	螺丝刀 (中)	screw driver	1	1	1
10	BF800DBFD	螺丝刀 (大)	screw driver	1	1	1
11	BF700M1910	内六角扳手 (1.6mm)	cross screw driver	1	1	1
12	BF700M199	内六角扳手 (1.5mm)	cross screw driver	1	1	1
13	BF700M1913	内六角扳手 (6mm)	cross screw driver	1	1	1
14	BF700M1912	内六角扳手 (5mm)	cross screw driver	1	1	1
15	BF700M1911	内六角扳手 (2mm)	cross screw driver	1	1	1
16	BF700M1917	金属线	metal guide	1	1	1
17	BF70011JZ	DC#27-11#机针	needle	4	4	4
18	BF70014JZ	DC#27-14#机针	needle	0	0	2
19	BF7005292	螺钉	screw	4	4	4
20	BF700M1317	下刀	lower knife	1	1	1
21	BF700M156	滤油器	oil filter	1	1	1

22	BF700M1919	脚踏板垫	presser foot base	1	1	1
23	BF700FJD	拉链附件袋	pocket	1	1	1
24	700.FKD	封口袋	pocket	1	1	1
25	BF700M1921	干燥剂 (20g)	Desiccant	2	2	2
26	4230288	798D附件空白纸箱	carton	1	1	1
27	14160152	说明书	Instructions	1	1	1
28	BF700TTZ	机头罩	cover	1	1	1

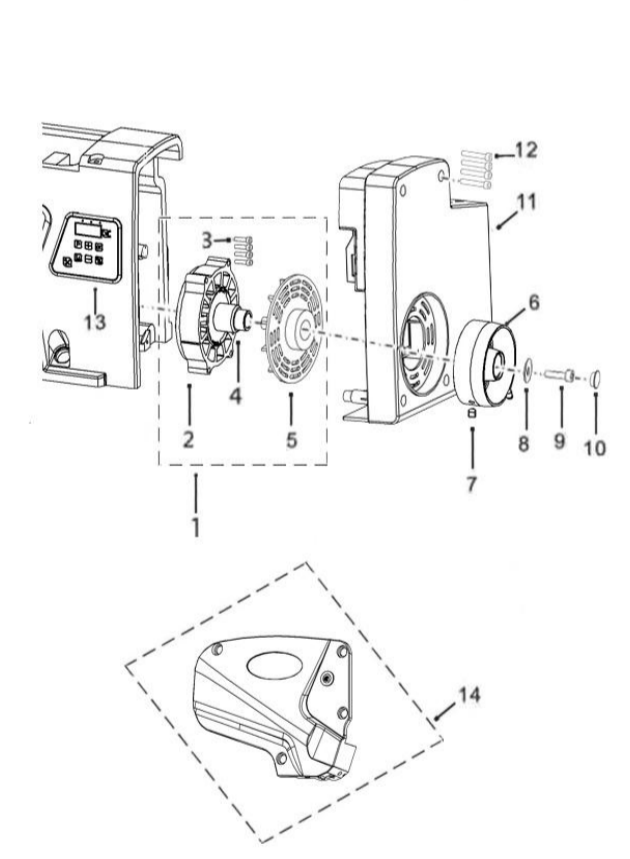
21. 二十一、电控部分/Electronic control



二十一、电控部件/Electronic Control

序号 NO.	品号 CODE	名称	NAME	数量 (Number)		
				三线 three- thread	四线 four- thread	五线 five- thread
1	BF700M181	机头托盘	machine head plate	1	1	1
2	700.ITKG	脚踏开关	Foot switch	1	1	1
3	700.MLD	木螺钉	screw	5	5	5
4	700.LG	拉杆	Pull rod	1	1	1
5	4230287	纸箱	carton	1	1	1
6	4330009	泡沫	Foam box	1	1	1

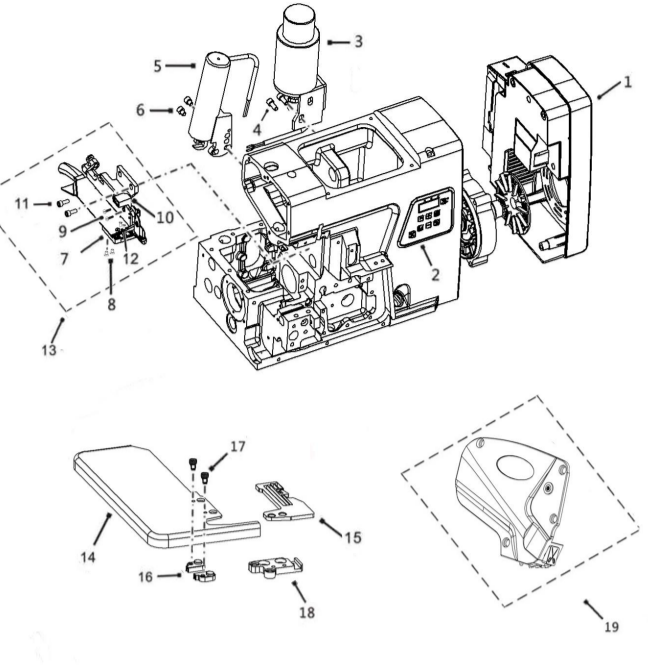
22. 二十二、电机部分/Motor assembly



二十二、电机部分/Motor Assembly

序号 NO.	品号 CODE	名称	NAME	数量 (Number)		
				三线 three- thread	四线 four- thread	五线 five- thread
1	KD2201	电机组件	Motor assembly	1	1	1
2	KD0Z	定子	Motor Stator	1	1	1
3	KDLD1	螺钉	Screw	4	4	4
4	KD0Z	转子	rotor	1	1	1
5	KDFS	风扇	Fan	1	1	1
6	KDSL	手轮	handwheel	1	1	1
7	KDLD2	螺钉	Screw	2	2	2
8	KD0P	垫片	washer	1	1	1
9	KDLD3	螺钉	Screw	1	1	1
10	KDJ5	胶塞	Rubber plug	1	1	1
11	BF700M1919	脚踏板垫	presser foot base	1	1	1
12	KDLD4	螺钉	Screw	4	4	4
13	KD0CMB	操作面板	Bracket	1	1	1
14	KD0Z1	灯组件	lamp	1	1	1

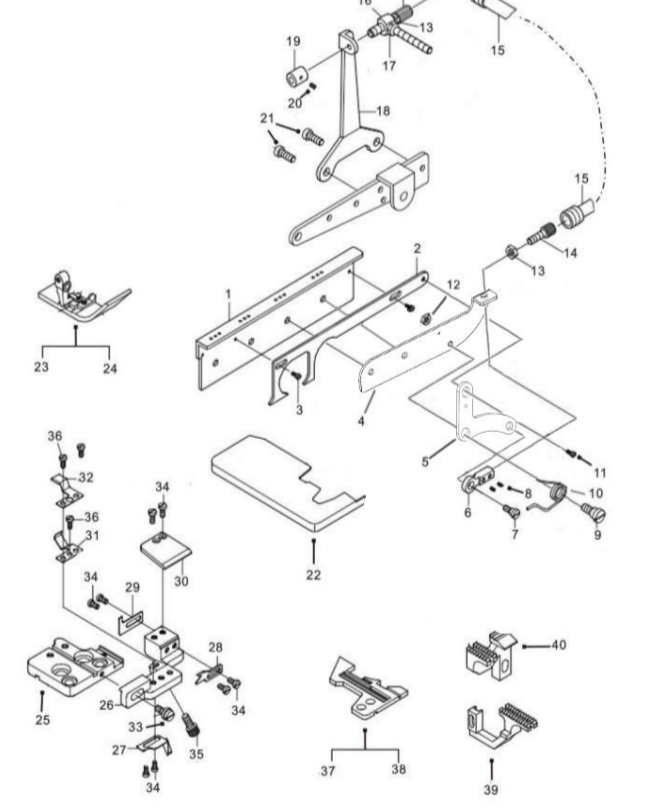
23. 二十三、电控/Controller



二十三、倒回缝部件/Reverse Sewing Assembly

序号 NO.	品号 CODE	名称	NAME	数量 (Number)		
				三线 three- thread	四线 four- thread	五线 five- thread
1	BFC4DKZJ	C4电控组件	Controller	1	1	1
2	BFD4CZMB	C4操作面板	Bracket	1	1	1
3	BFC4DCTZJ-TY	抬压脚电磁铁组件 (含支架、接头)	Electromagnet Assembly	1	1	1
4	SK-620601202-1	螺钉	Screw	2	2	2
5	BFC4DCTZJ-JX	剪线电磁铁组件 (含支架、接头)	Electromagnet Assembly	1	1	1
6	SK-620601202-1	螺钉	Screw	2	2	2
7	BFC4DZGY	刀组光眼 (C4)	Indicator	1	1	1
8	PF1310A16	螺钉	Screw	1	1	1
9	S02007	螺钉	Screw	2	2	2
10	BFDZAGKG	刀组安全开关	Safety switch	1	1	1
11	SK-620601202-1	螺钉	Screw	2	2	2
12	BF8897259	螺钉	Screw	2	2	2
13	BFX5JXDZJ-1	剪线刀组件 (无光眼)	Cutter Assembly	1	1	1
14	KX0321B	X4缝台组件-UT	Cloth Plate	1	1	1
15	BF798UTM625	UT针板	Needle Plate	1	1	1
16	BFC4XGY	下光眼 (C4)	Indicator	1	1	1
17	SK-100350502-1	螺钉	Screw	2	2	2
18	BF798UTM620	UT针板座	Bracket	1	1	1
19	BFC4SGY	上光眼 (C4)	Indicator	1	1	1

24. 二十四、倒回缝部件/Reverse sewing assembly



二十三、倒回缝部件/Reverse Sewing Assembly

序号 NO.	品号 CODE	名称	NAME	数量 (Number)		
				三线 three- thread	四线 four- thread	五线 five- thread
1	BF700GBK22E	过线板	thread guide	1	1	0
2	BF700BK18E	松线推板	thread guide	1	1	0
3	BF700SK358	螺钉	screw	2	2	0
4	BF700BK19E2	前支架	bracket	1	1	0
5	BF700BK20E2	小铁板	plate	1	1	0
6	BF700GB12	钢丝接头	joint	1	1	0
7	BF700SK360	螺钉	screw	1	1	0
8	BF700S292	螺钉	screw	2	2	0
9	BF700SK412	螺钉	screw	1	1	0
10	BF700BK21	较链簧	spring	1	1	0
11	BF700SK363	螺钉	screw	1	1	0
12	BF700N03	螺母	nut	1	1	0
13	BF700GB151	螺母	nut	2	2	0
14	BF700GB15	螺钉	spring	2	2	0

15	BF700GB13	钢丝	wire	1	1	0
16	BF700GB14B	螺母 (连接套)	nut	1	1	0
17	BF700GB141	螺钉 (特长)	screw	1	1	0
18	BF700GB16	压脚柄连接架	bracket	1	1	0
19	BF700GB17	松线锁块	Collar	1	1	0
20	BF700S043	螺钉	screw	1	1	0
21	BF700S032	螺钉	screw	2	2	0
22	BF2002020100BK	缝台组件 (倒回缝)	Cloth Plate	1	1	0
23	BF700P9753	倒回缝三线压脚	Presser Foot	1	0	0
24	BF700P9754	倒回缝四线压脚	Presser Foot	0	1	0
25	BF2002060100BK	针板座组件 (倒回缝)	thread plate bracket assy	1	1	0
26	BF700BK08F	小刀架	Knife Holder	1	1	0
27	BF700BK08F4	调节螺钉限位簧	spring	1	1	0
28	BF700BK10F	倒回缝割线刀	chain cutter	1	1	0
29	BF700BK08F3	挡线板	ajusting Plate	1	1	0
30	BF700GBK02F	割线刀压板	chain cutter gib	1	1	0
31	BF700BK08F2	压线板	thread retainer	1	1	0
32	BF700BK08F1	托线板	thread retainer	1	1	0
33	BF700S100	螺钉	screw	1	1	0
34	BF700SK207	螺钉	screw	6	6	0
35	BF700BK08F5	调节螺钉	screw	1	1	0
36	BF700SK221	螺钉 (通S012)	screw	1	1	0
37	BF700E589F	倒回缝三线针板	needle plate	1	0	0
38	BF700E591	倒回缝四线针板	needle plate	0	1	0
39	BF700H974	倒回缝差动牙	differential Feed Dog	1	1	0
40	BF700D390	倒回缝送料牙	main feed dog	1	1	0

专用零件表

机型	针板	主送齿组件	差动齿	压脚	上弯针	链线弯针	针夹	针
MACHINE TYPE /SPEC	NEEDLE PLATE	MAIN FEED DOG ASSM	DIFF FEED DOG	presser foot	Upper Looper	Chainstitch Looper	needle Holder	needle
XXX-3-15	BF700R4200	BF700YC04		BF700P253E	BF700M730		BF2002050008	BF70011JZ
XXX-3-04	BF700E800	BF700YC04		BF700M1431	BF700M730		BF2002050008	BF70011JZ
XXX-4-24	BF700E919	BF700YC04		BF700M1431	BF700M730	/	BF2002050009	BF70011JZ
XXX-4-24BK	BF700E591	BF700YC04		BF700P9754	BF700M730		BF2002050009	BF70011JZ
XXX-4-24H	BF700E809	BF700YC04		BF700M14271	BF700M730		BF2002050009	BF70016JZ
XXX-5-35	BF700E982	BF700YC05		BF700M1431	BF700M730	BF7005M92	BF2002050010	BF70014JZ
XXX-5-55	BF700E986	BF700YC05		BF800208502	BF700M730	BF7005M92	BF2002050013	BF70014JZ
XXX-5-56	BF700E870	BF700YC05ZH		BF700M14311	BF700M730	BF7005HM92	BF2002050012	BF70018JZ

